



Nivault is one of the leading professional electro-magnetic lock manufacturers in India, and serving the industry over a decade.

Our varied product portfolio is perfected to comply with international standards and security requirements with stable performance, competitive price and personalized service.

Nivault has a strong technical, marketing and R&D team to ensure the product fits into the need of client. The R&D team aims to develop, research, design and produce more innovative products that suit the market demand in the industry.

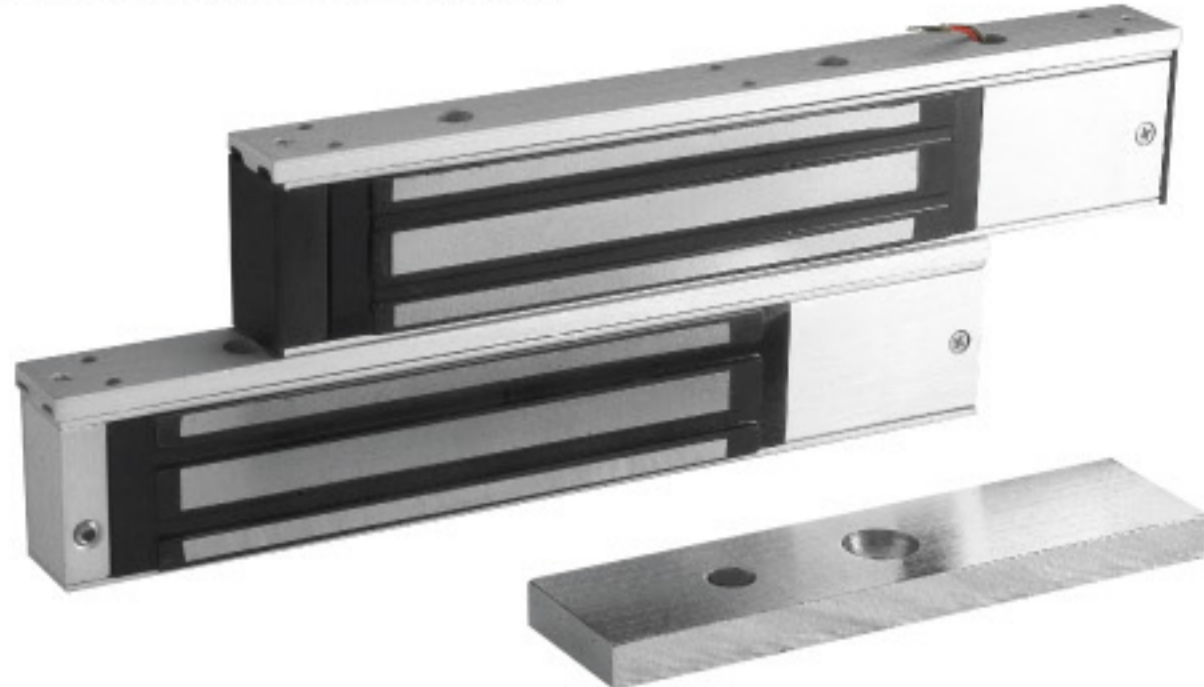
Nivault will always be devoted to offer good quality and new technology products to create much more value to our customers.

Electro Magnetic Locks



Model No.**NV-600L (With LED)****Specifications**

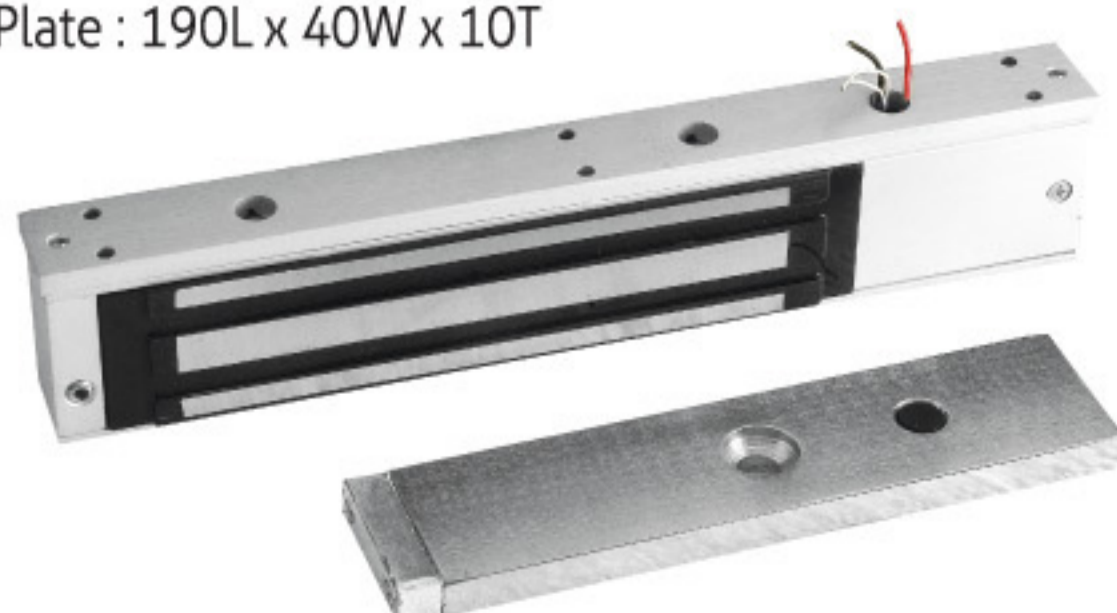
Current Draw : 480M @ 12V DC; 240MA @ 24V DC
 Holding Force : 600 Lbs (272 Kgs)
 Dimensions : 250L x 42W x 28T
 Armature Plate : 160L x 40W x 12T

**Model No.****NV-600LM (With Feedback)****Specifications**

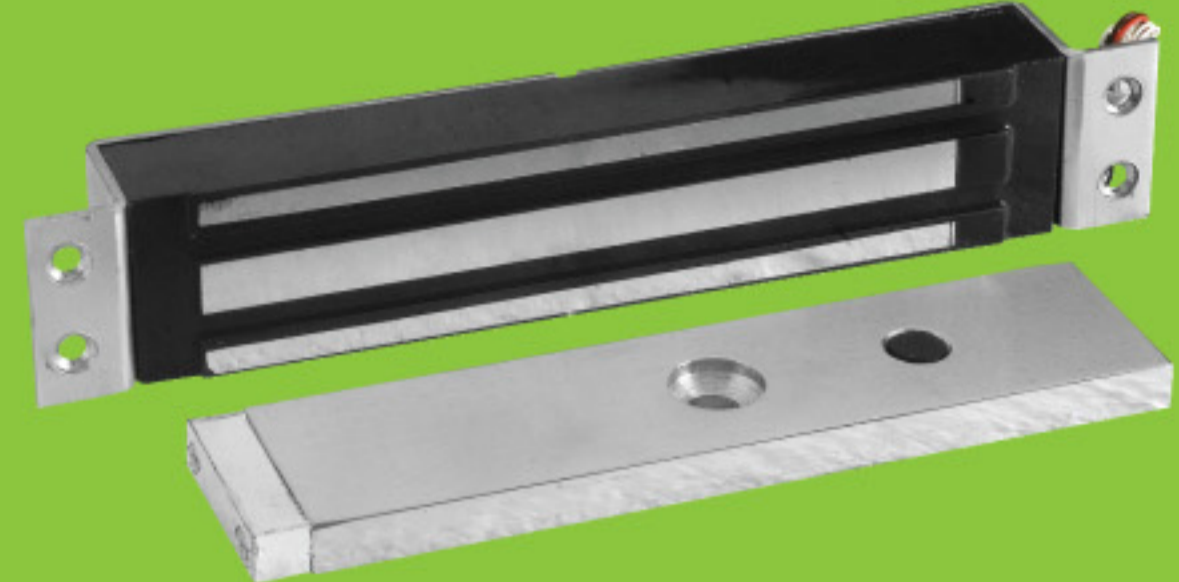
Current Draw : 480MA @ 12V DC; 240MA @ 24V DC
 Door status sensor output (NO, NC, COM)
 Green / Red LED indication for Door Status.
 Holding Force : 600 Lbs (272 Kgs)
 Dimensions : 250L x 42W x 28T
 Armature Plate : 160L x 40W x 12T

**Model No.****NV-600MC (Reed Sensor)****Specifications**

Current Draw : 480MA @ 12V DC; 240MA @ 24V DC
 Magnetic Contact for Door Status (No Type)
 Holding Force : 600 Lbs (272 Kgs)
 Dimensions : 250L x 42W x 28T
 Armature Plate : 190L x 40W x 10T

**Model No.****NV-600MMC (Mortise Mount)****Specifications**

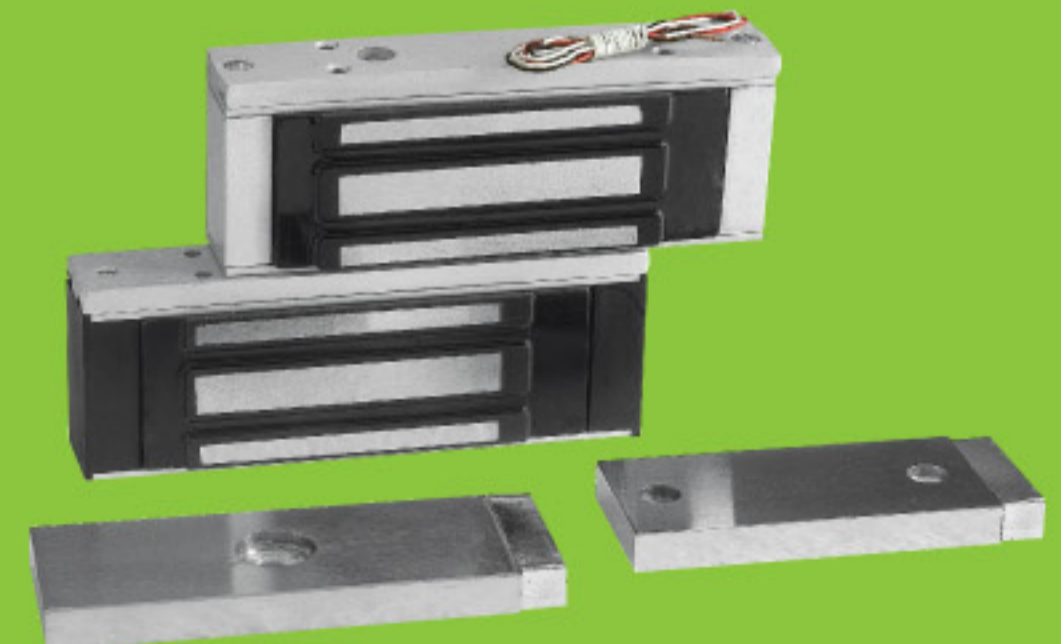
Current Draw : 480M @ 12V DC; 240MA @ 24V DC
 Magnetic Contact for Door Status (No Type)
 Holding Force : 600 Lbs (272 Kgs)
 Dimensions : 220L x 438W x 27T
 Armature Plate : 190L x 40W x 10T

**Model No.****NV-600DL (Dual Leaf)****Specifications**

Current Draw : 960MA @ 12V DC; 480MA @ 24V DC
 Holding Force : 600 Lbs x 2 (272 Kgs x 2)
 Dimensions : 500L x 42W x 28T
 Armature Plate : 160L x 40W x 12T

**Model No.****NV-300MC****Specifications**

Current Draw : 200MA @ 12V DC; 100MA @ 24V DC
 Holding Force : 300 Lbs (136 Kgs)
 Dimensions : 132L x 42W x 28T
 Armature Plate : 110L x 40W x 10T

**Common Features for all above products :**

Voltage Tolerance : 15%
 Voltage Input : 12 / 24V DC
 Operating Temperature : 0-55°C
 Anti Rust Surface Treatment: Blue Zinc Plating / Nickle Chrome Plating
 Warranty : 2 Years

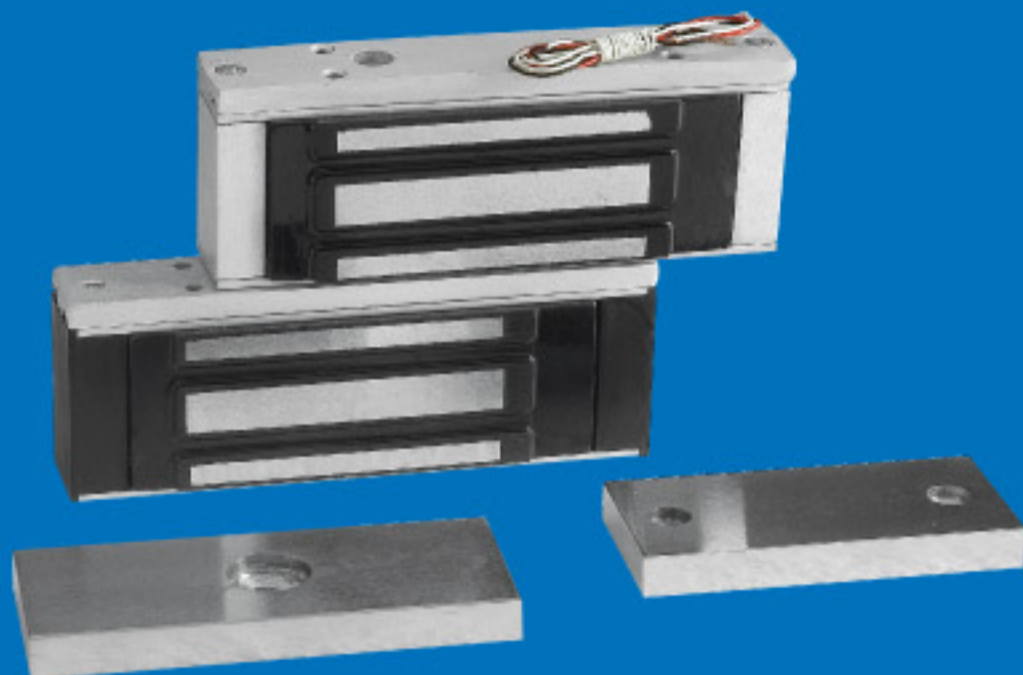
Model No.**NV-100MC****Specifications**

Current Draw : 200MA @ 12V DC; 100MA @24V DC

Holding Force : 100 Lbs (46 Kgs)

Dimensions : 111L x 42W x 28T

Armature Plate : 85L x 40W x 10T

**Model No.****FLP cum ENCAPSULATED
ELECTROMAGNETIC DOOR CLOSER****Specifications**

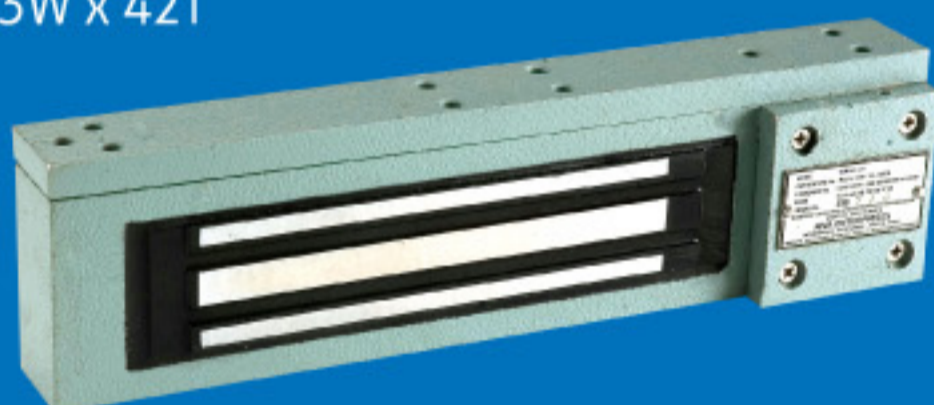
Standards : IS/IEC 60079-0 : 2007,

IS/IEC 60079-1 : 2007

IS/IEC 60079-18 : 2009

Marking : Ex d mb IIB T6 GB

Dimension : 276L x 63W x 42T

**Model No.****Flameproof Switch Enclosure****Specifications**

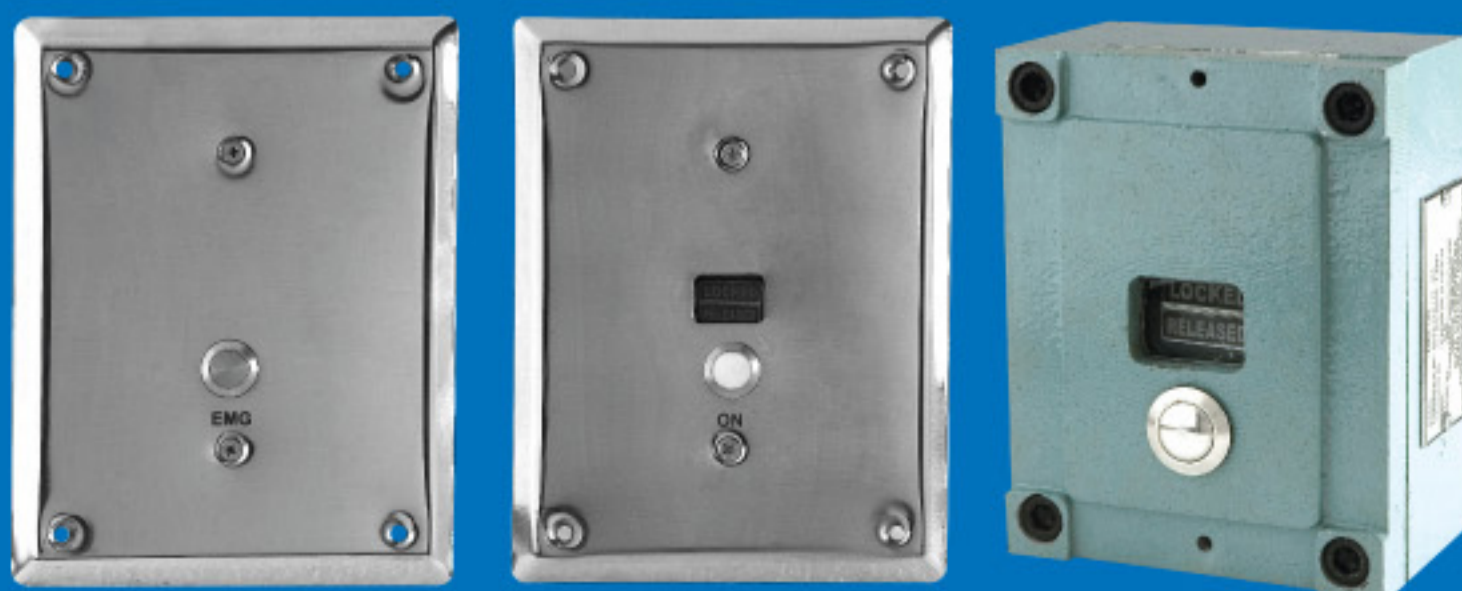
Standards : IS/IEC 60079-0 : 2007,

IS/IEC 60079-1 : 2007

Marking : Ex d IIB T6 GB

Dimension : 104L x 84W x 44T

SS Panel Dimension : 181mm x 140mm

**ACCESSORIES**

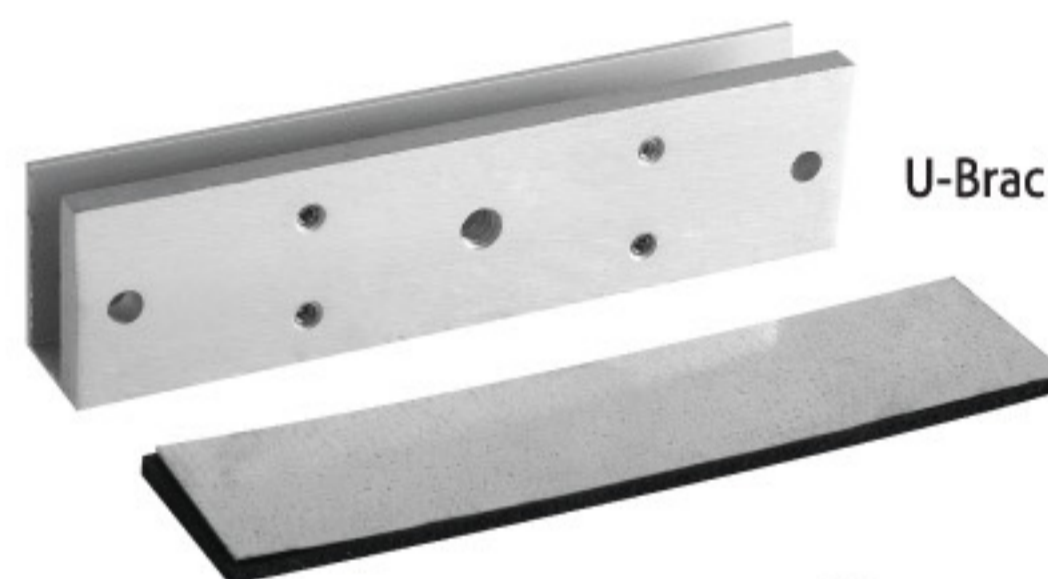
3" x 3" Exit Switch



1" x 3" Exit Switch



L-Bracket



U-Bracket



Z-Bracket

Model No.**NV-1000 Electric Bolt Lock****Specifications**

Current Draw : Start Current : 850mA, Standby Current : 150mA

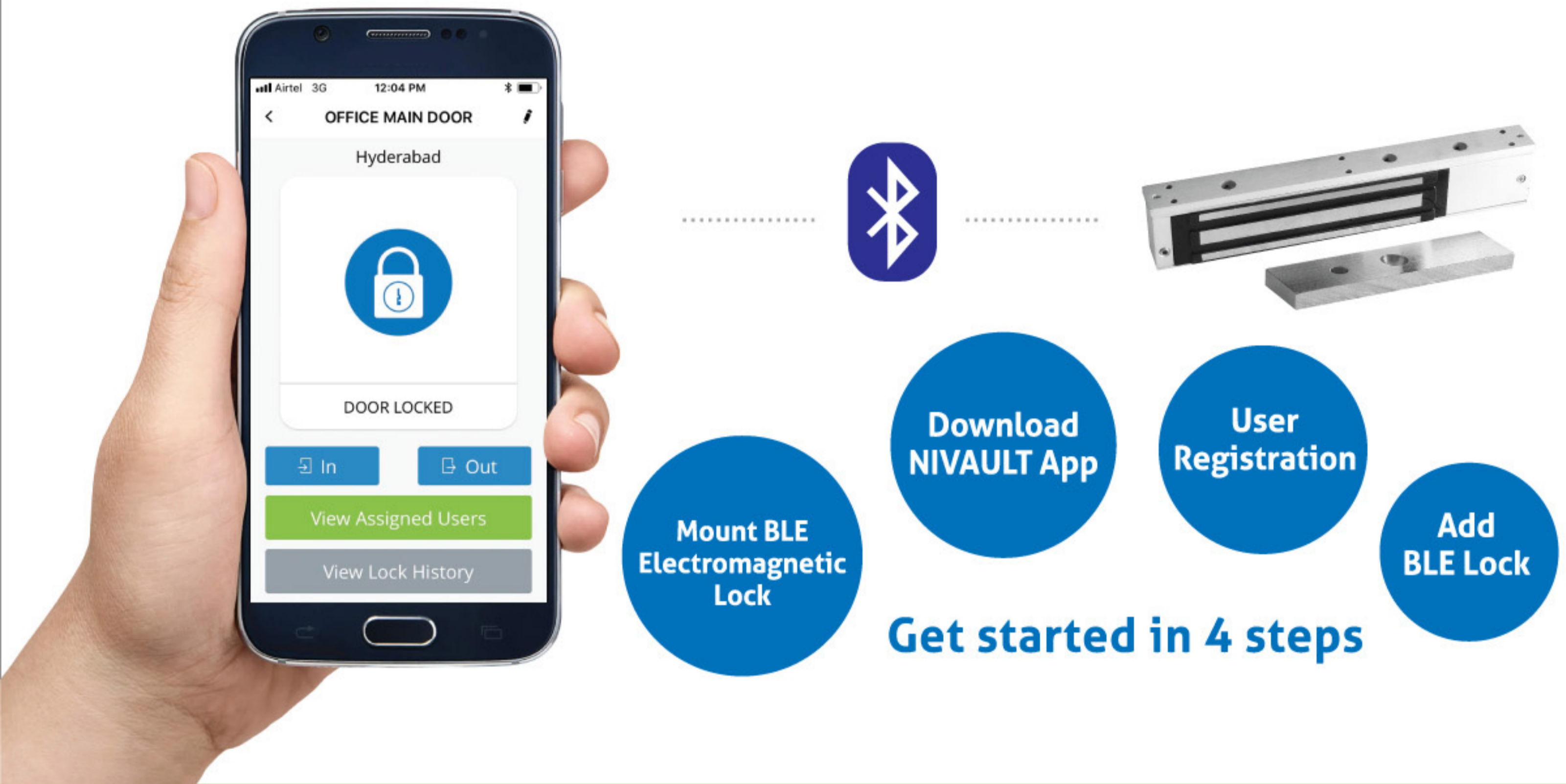
Door Status Output : NO / COM

Holding Force : 1000 Kgs

Auto Lock Time Delay : 0, 3, 6, 9 Sec.



SMART BLE ELECTROMAGNETIC LOCK



Features

- Unlimited Guest (Users) Access
- Unlimited Doors Access
- Time-Based Access For Guest
- Lock Level Permission
- Data On Cloud
- Highly Secured App
- 5 Sec Auto-Lock
- Soft Switch Output For An Exit Button
- Operating Time 2-3 Sec
- Operation Distance 15 ft
- Access Only with Registered Mobile
- Door Status Output
- Easy Configuration
- Access History



NIVA ENTERPRISES

10-1-208/2, First Floor, Pipeline Road,
Fathenagar, Hyderabad-500 018, T.S., India.
Tel: 040-4855 3211, Cell: 98493 43800
E-mail: sales@nivaindia.com
Visit us at: www.nivaindia.com